

Specifications  
Geometri  
by Verner Panton, 1960  
459970

**maharam**

**Application**

Seating

Note: This textile is available as a made-to-order pillow.

**Characteristics**

Content: 77% Cotton, 23% Polyester

Finish: Stain Repellent

Additional Finishes Available: Alta, Alta Food and Beverage, Antimicrobial Stain Resistant Finish with Impermeable Backing, Nanotex, Nanotex with Impermeable Barrier

Backing: None

Width: 55" (140cm)

Repeat: 26 1/2" V, 13" H (67cm V, 33cm H)

Bolt Size: 38 yards (35 m)

Weight: 21.8 oz/ly (675 gr/lm)

Country of Origin: Germany

**Price**

\$161.00 / C\$233.50 (FOB destination) / C\$230.00 (FOB origin)

**Maintenance**

S-Clean with mild, water-free dry cleaning solvent.



**Testing**

Abrasion: ASTM D4157, 42,000 double rubs Wyzenbeek

Note: Abrasion test results exceeding ACT Performance Guidelines are not an indicator of product lifespan.

Multiple factors affect fabric durability and appearance retention.

Flammability: AS/NZS 1530.3

AS/NZS 3837 Unadhered

CAL 117-2013

NFPA 260

Lightfastness: AATCC 16.3, 40+ hours



Specifications  
Geometri  
by Verner Panton, 1960  
459970

**maharam**

**Environmental**

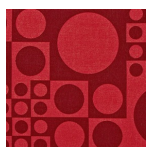
Greenguard Gold Certified  
Oeko-Tex Certified  
REACH Compliant  
Contains Bio-Based Content  
FR Free

**Warranty**

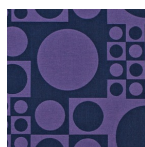
3 years.

© 2001 Verner Panton, Maharam under license

Complete product information at [maharam.com](http://maharam.com)  
800.645.3943



002 Red/Carmine



003 Lilac/Blue



004 White/Black