

Specifications
Small Dot Pattern
by Charles and Ray Eames, 1947
458320

maharam

Application

Seating

Note: This textile is available as a made-to-order pillow.

Characteristics

Content: 71% Cotton, 29% Polyester

Finish: Stain Repellent

Additional Finishes Available: Alta, Alta Food and Beverage, Antimicrobial Stain Resistant Finish with Impermeable Backing, Nanotex, Nanotex with Impermeable Barrier

Backing: None

Width: 55" (140cm)

Repeat: 7 1/2" V, 12 3/4" H (19cm V, 32cm H)

Bolt Size: 38 yards (35 m)

Weight: 16.8 oz/ly (521 gr/lm)


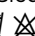

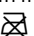

Country of Origin: Germany

Price

\$146.00 / C\$212.25 (FOB destination) / C\$208.75 (FOB origin)

Maintenance

S-Clean with mild, water-free dry cleaning solvent.

Testing

Abrasion: ASTM D4157, 42,000 double rubs Wyzenbeek

Note: Abrasion test results exceeding ACT Performance Guidelines are not an indicator of product lifespan.

Multiple factors affect fabric durability and appearance retention.

Flammability: AS/NZS 1530.3

BS 5852 Crib 5*

CAL 117-2013

EN 1021-1*

EN 1021-2*

ISO 5660 Unadhered

NFPA 260

*passes with additional treatment

Lightfastness: AATCC 16.3, 40+ hours

Specifications
Small Dot Pattern
by Charles and Ray Eames, 1947
458320

maharam

Environmental

Greenguard Gold Certified

Oeko-Tex Certified

REACH Compliant

Contains Bio-Based Content

FR Free

Brief

Small Dot Pattern was designed by Charles and Ray Eames for a 1947 textile competition at the Museum of Modern Art.

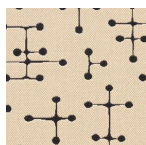
Warranty

3 years.

© 2000 Eames Office. A Charles and Ray Eames Design™ fabric. All rights reserved.

Complete product information at maharam.com

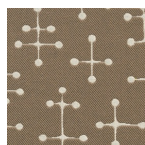
800.645.3943



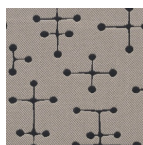
001 Document



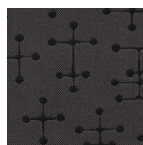
002 Sand



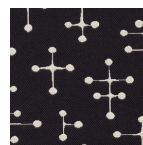
003 Khaki



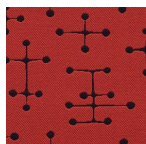
004 Taupe



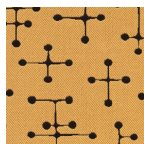
005 Charcoal



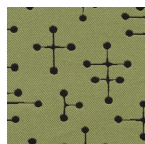
006 Document Reverse



007 Red



008 Yellow



009 Green