

Specifications  
Dot Pattern  
by Charles and Ray Eames, 1947  
458300

**maharam**

**Application**

Seating

Note: This textile is available as a made-to-order pillow.

**Characteristics**

Content: 71% Cotton, 29% Polyester

Finish: PFAS-Free Water Repellent

Additional Finishes Available: Alta, Alta Food and Beverage, Antimicrobial Stain Resistant Finish with Impermeable Backing, Nanotex, Nanotex with Impermeable Barrier

Backing: None

Width: 55" (140cm)

Repeat: 15 1/4" V, 26" H (39cm V, 66cm H)

Bolt Size: 38 yards (35 m)

Weight: 16.8 oz/ly (521 gr/lm)

Country of Origin: Germany

**Price**

\$146.00 / C\$212.25 (FOB destination) / C\$208.75 (FOB origin)

**Maintenance**

S-Clean with mild, water-free dry cleaning solvent.



**Testing**

Abrasion: ASTM D4157, 63,000 double rubs Wyzenbeek

Note: Abrasion test results exceeding ACT Performance Guidelines are not an indicator of product lifespan.

Multiple factors affect fabric durability and appearance retention.

Flammability: AS/NZS 1530.3

AS/NZS 3837 Unadhered

BS 5852 Crib 5\*

CAL 117-2013

EN 1021-1\*

EN 1021-2\*

NFPA 260

UNI 9175\*

\*passes with additional treatment

Lightfastness: AATCC 16.3, 40+ hours



Specifications  
Dot Pattern  
by Charles and Ray Eames, 1947  
458300

**maharam**

**Environmental**

Greenguard Gold Certified  
Oeko-Tex Certified  
Healthier Hospitals Compliant  
LBC Red List Free  
REACH Compliant  
Contains Bio-Based Content  
FR Free  
Free of Intentionally Added PFAS

**Brief**

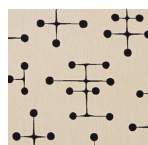
Dot Pattern was designed by Charles and Ray Eames for a 1947 textile competition at the Museum of Modern Art.

**Warranty**

3 years.

© 2000 Eames Office. A Charles and Ray Eames Design™ fabric. All rights reserved.

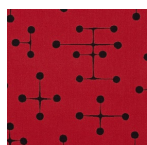
Complete product information at [maharam.com](http://maharam.com)  
800.645.3943



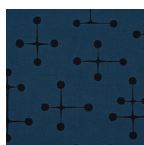
001 Document



002 Taupe



004 Red



005 Navy