

Specifications

Mohair Supreme

451801

maharam

Application

Seating

Windows require additional finishes.

Note: This textile is available as a made-to-order pillow.

Characteristics

Content: 100% Mohair

Finish: None

Backing: Cotton

Width: 54" (137cm)

Bolt Size: 27 yards (25 m)

Weight: 26 oz/ly (806 gr/lm)

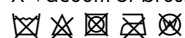
Country of Origin: Netherlands

Price

\$250.00 / C\$360.75 (FOB destination) / C\$357.25 (FOB origin)

Maintenance

X-Vacuum or brush lightly to remove surface dust.



Testing

Abrasion: ASTM D4157, 70,000 double rubs Wyzenbeek

Note: Abrasion test results exceeding ACT Performance Guidelines are not an indicator of product lifespan.

Multiple factors affect fabric durability and appearance retention.

Flammability: AS/NZS 3837 Unadhered

BS 5852 - PART 1

BS 5852 Crib 5

BS 5867

CAL 117-2013

EN 1021-1

EN 1021-2

NFPA 260

NFPA 701*

*passes with additional treatment

Lightfastness: AATCC 16.3, 40+ hours



Specifications
Mohair Supreme
451801

maharam

Environmental

Cradle To Cradle Basic Certified
Oeko-Tex Certified
Healthier Hospitals Compliant
LBC Red List Free
REACH Compliant
Contains Bio-Based Content
FR Free
Free of Intentionally Added PFAS

Warranty

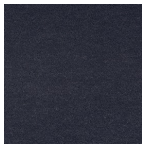
3 years.

© 1998 Maharam

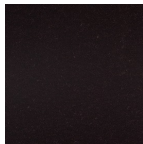
Complete product information at maharam.com
800.645.3943



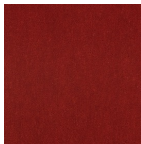
072 Stonehenge



112 Slate



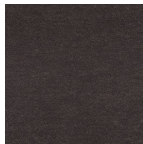
113 Rich Chocolate



126 Cayenne



127 Cognac



129 Peat



133 Abyss



134 Intrigue



136 Lupine



146 League



147 Armory



150 Capiz



151 Underneath



152 Crescent



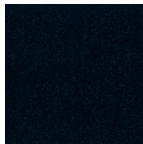
153 National



154 Rooftop



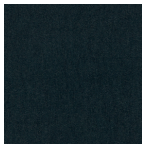
155 Skewer



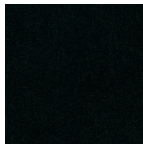
156 Party



157 Keepsake



158 Travel



159 Estate



160 Grassland



161 Limoncello



162 Mango



163 Doll



164 Carousel



165 Palette



166 Brandy



167 Aristocrat



168 Soulmate



169 Rosette