

Specifications

Tussle

399954

maharam

Application

Walls

Characteristics

Content: 90% Thermoplastic Olefin, 10% Post-Industrial Recycled Glass

Finish: PFAS-Free Protective Topcoat

Backing: Polyester / Cellulose

Width: 52" (132cm)

Bolt Size: 30 yards (27 m)

Weight: 18 oz/ly (558 gr/lm)

Traffic: High-Suitable for all applications including heavy duty.

Country of Origin: USA

Note on Mold: Intended for use in buildings designed and maintained to avoid moisture on or within walls.

Application must conform to current Installation Guidelines included in each shipment.

Price

\$38.50 / C\$58.50 (FOB destination) / C\$55.00 (FOB origin)

A \$3.00/C\$4.00 per yard cutting charge applies to orders under 30 yards.

Maintenance

W-Clean with water-based cleanser.

☒ ☒ ☒ ☒ Ⓢ

Testing

Flammability: ASTM E84 Adhered

Lightfastness: AATCC 16.3, 200+ hours

☀️ 🔥 🖨️

Specifications
Tussle
399954

maharam

Environmental

Greenguard Gold Certified
Healthier Hospitals Compliant
LBC Red List Free
Contains Recycled Content
FR Free
Free of Intentionally Added PFAS

Warranty

10 years.

© 2017 Maharam

Complete product information at maharam.com
800.645.3943



001 Rye



004 Whisper



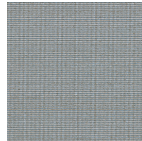
005 Jog



006 Wander



007 Poplar



009 Canal



011 Fade



012 Ostrich



013 Whim



014 Ode



016 Lark