

# Specifications

Lane  
399851

**maharam**

## Application

Walls

## Characteristics

Content: 90% Polyolefin, 10% Post-Consumer Recycled Glass

Finish: None

Backing: Polyester / Cellulose

Width: 52" (132cm)

Bolt Size: 30 yards (27 m)

Weight: 18 oz/ly (558 gr/lm)

Traffic: High-Suitable for all applications including heavy duty.

Country of Origin: USA

Note on Mold: Intended for use in buildings designed and maintained to avoid moisture on or within walls.

Application must conform to current Installation Guidelines included in each shipment or available at maharam.com.

## Price

\$31.00 / C\$43.25 (FOB destination) / C\$39.75 (FOB origin)

A \$3.00/C\$4.00 per yard cutting charge applies to orders under 30 yards.

## Maintenance

W-Clean with water-based cleanser.



## Testing

Flammability: ASTM E 84 Adhered

Lightfastness: AATCC 16E, 200+ hours



# Specifications

Lane

399851

**maharam**

## Environmental

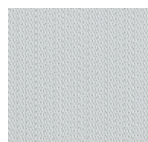
Greenguard Gold Certified  
Healthier Hospitals Compliant  
LBC Red List Free  
Contains Recycled Content  
FR Free  
PFAS Free

## Warranty

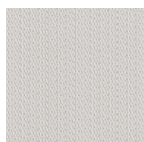
10 years.

© Maharam 2017

Complete product information at [maharam.com](http://maharam.com)  
800.645.3943



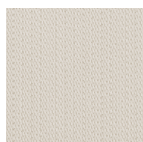
001 Lithium



002 Sachet



003 Sawdust



004 Mild



006 Toffee



008 Launch



010 Lit



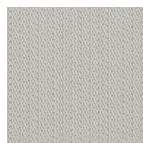
012 Clear



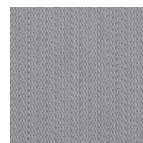
014 Sing



015 Twist



016 Sylvan



017 Cavern