

Specifications

Dusk

399638

maharam

Application

Walls

Characteristics

Content: 65% Cellulose, 35% Latex

Finish: PFAS-Free Protective Topcoat

Backing: None

Reference Dimension: 10' x 15' (305cm x 457cm)

Customs: Repeatable, Scalable

Country of Origin: USA

Note on Mold: Intended for use in buildings designed and maintained to avoid moisture on or within walls.

Application must conform to current Installation Guidelines included in each shipment or available at

maharam.com.

Price

Installation is sized, priced and produced on a project-specific basis

Maintenance

W-Clean with water-based cleanser.



Testing

Flammability: AS/NZS 3837 Adhered

ASTM E84 Adhered

CAN ULC S102 Adhered

ISO 5660 Adhered

Lightfastness: AATCC 16.3, 40+ hours



Specifications

Dusk

399638

maharam

Environmental

Greenguard Gold Certified

LBC Red List Free

Contains Bio-Based Content

FR Free

Free of Intentionally Added PFAS

Brief

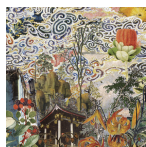
Francesco Simeti is an Italian-born artist based in New York and Sicily who uses mass media images hidden in decorative patterns to point to a darker subtext. Based on Italo Calvino's 1972 novel *Invisible Cities*, Simeti's *Dusk* is a dense cityscape depicting the fantasies and grotesqueries of a modern metropolis layered with overgrown foliage.

Warranty

3 years.

© 2014 Francesco Simeti, Maharam under license

Complete product information at maharam.com
800.645.3943



001