

# Specifications

## Tile

### 399621

**maharam**

#### Application

Walls

#### Characteristics

Content: 63% Polyester, 37% Cellulose

Finish: None

Backing: 60% Post-Consumer Recycled Paper, 40% Paper

Width: 36" (91cm)

Repeat: Non-match

Bolt Size: 55 yards (50 m)

Weight: 4 oz/ly (123 gr/lm)

Traffic: Low-Suitable for private offices, conference rooms, residential and low traffic applications where superior cleanability is not a priority. Not appropriate for corridor applications.

Country of Origin: Japan

Note: This product uses iridescent inks which produce subtle variations in color when viewed from different angles and under different light sources.

Note on Mold: Intended for use in buildings designed and maintained to avoid moisture on or within walls.

Application must conform to current Installation Guidelines included in each shipment or available at maharam.com.

#### Price

\$33.00 / C\$46.29 (FOB destination) / C\$40.75 (FOB origin)

A \$3.00/C\$4.00 per yard cutting charge applies to orders under 55 yards.

#### Maintenance

X-Vacuum or brush lightly to remove surface dust.

☒ ☒ ☒ ☒ ☒

#### Testing

Flammability: ASTM E 84 Adhered

☼ 🔥 🔥

# Specifications

## Tile

399621

**maharam**

### Environmental

Greenguard and Greenguard Gold Certified

Healthier Hospitals Compliant

LBC Red List Free

Contains Bio-Based Materials

Contains Recycled Content

FR Free

PFAS-Free

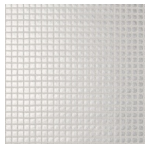
### Warranty

1 year.

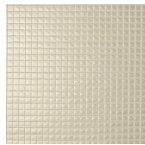
© 2014 Maharam

Complete product information at [maharam.com](http://maharam.com)

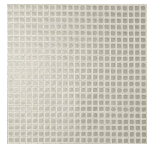
800.645.3943



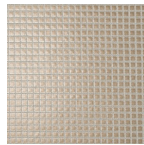
001 Moonshine



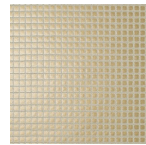
002 Parlor



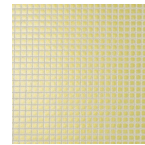
003 Slate



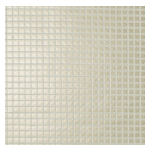
004 Hearth



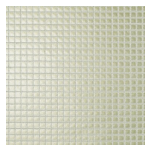
005 Taupe



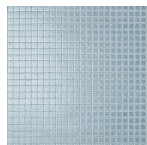
006 Helio



007 Oyster



008 Sage



009 Mermaid