

# Specifications

## Tek-Wall Measure Backed

### 399436

**maharam**

#### Application

Upholstered Walls, Walls

Note: This textile is available unbacked.

#### Characteristics

Content: 61% Solution-Dyed Polyolefin, 39% Solution-Dyed Post-Consumer Recycled Polyester

Finish: Stain Repellent

Backing: Acrylic

Width: 54" (137cm)

Bolt Size: 50 yards (46 m)

Weight: 11.7 oz/ly (363 gr/lm)

Traffic: High-Suitable for all applications including heavy duty.

Country of Origin: USA

Note: Variations in color and texture are inherent to this textile.

Note on Mold: Intended for use in buildings designed and maintained to avoid moisture on or within walls.

Application must conform to current Installation Guidelines included in each shipment or available at maharam.com.

#### Price

\$32.00 / C\$45.75 (FOB destination) / C\$42.25 (FOB origin)

A \$3.00/C\$4.00 per yard cutting charge applies to orders under 50 yards.

#### Maintenance

W/S/B-Clean with water-based cleanser; mild, water-free dry cleaning solvent, or diluted household bleach.



#### Testing

Acoustics: ASTM C423, 0.65 NRC

Flammability: AS/NZS 3837 Adhered

ASTM E 84 Adhered

ASTM E 84 Unadhered

BS 476 Adhered\*

EN 13501 Adhered\*

EN 13501 Unadhered\*

GB 8624\*

ISO 5660 Adhered

\*passes with additional treatment

Lightfastness: AATCC 16E, 200+ hours



Specifications  
Tek-Wall Measure Backed  
399436

**maharam**

**Environmental**

Greenguard and Greenguard Gold Certified  
Contains Recycled Content  
Produced in an ISO 14001 Facility  
Solution-Dyed Product  
FR Free

**Warranty**

10 years: Walls  
3 years: Upholstered Walls.

© 2011 Maharam

Complete product information at [maharam.com](http://maharam.com)  
800.645.3943



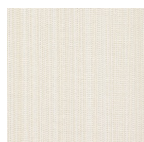
001 Vanilla



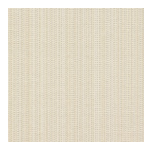
002 Atrium



003 Steeple



005 Tussah



006 Latte