

## Specifications

East  
200240

**maharam**

### Application

Floors

### Characteristics

Content: 63% Wool, 37% Cotton

Construction: Handwoven

Backing: None

Maximum Width: 13' 2" (400cm)

Maximum Length: 16' 5" (500cm)

Size variation: +/- 5%

Height: 7/8" (22mm)

Weight: 17.7 oz/sq ft (5400 g/sq m)

Traffic: Moderate-Suitable for most applications with the exception of high traffic stairways, corridors, public waiting areas, or for use with casters.

Country of Origin: India

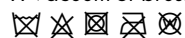
Note: Variations in color and texture are inherent to this textile. Reversible.

### Price

\$78.00 / C\$102.75 per square foot (FOB origin)

### Maintenance

X-Vacuum or brush lightly to remove surface dust.



### Testing

Flammability: ASTM D 2859 / CPSC FF 1-70 / FF 2-70, 16 CFR 1630

JFRA 45°

## Specifications

East

200240

**maharam**

### Environmental

Contains Bio-Based Materials

FR Free

PFAS-Free

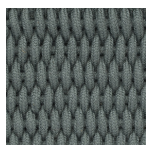
### Warranty

2 years.

© 2014 Maharam

Complete product information at [maharam.com](http://maharam.com)

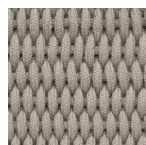
800.645.3943



132



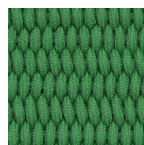
192



212



472



962